



Divine Elements of Design

CERTIFIED INTERIOR DECORATORS

eDecorating Questionnaire and Tools

Please take a few moments to complete the information requested below. Brief answers are fine. Involve your entire household. Have fun telling us about your wants and needs. We would like to take full advantage of the time we share together and your input is essential. Thank you for your cooperation. All information will be kept confidential.

Contact Information

Name:

Birthday (Month and Day only):

Address:

City, State Zip Code:

Home Phone:

Work Phone:

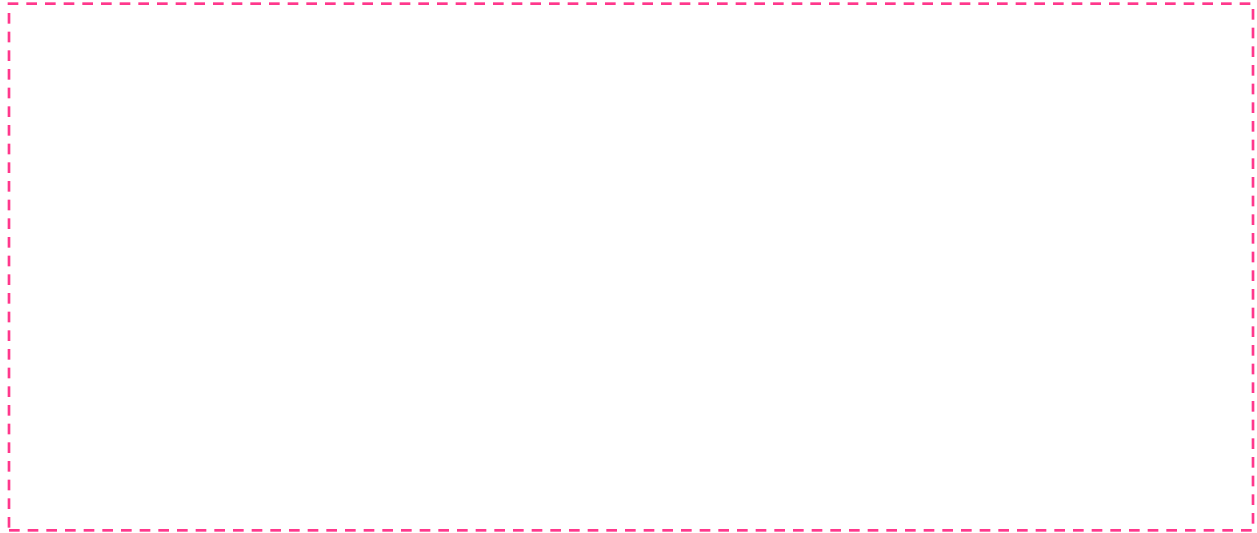
Cell Phone:

Email:

How would you prefer to be contacted? (Check all that apply)

Work Phone Home Phone Cell Phone Email

How did you find out about Divine Elements of Design?



Household Information:

House square footage:

Age of house:

Bedrooms:

Baths:

How long have you lived in your home and how long do you plan to live in your home?



Family Details

Who are the decision makers?



Who lives in your home and what are their ages? (Will your rooms need to serve different functions in the future for any household members?)



Do you have pets? Are they allowed on furniture? Are they allowed to roam the entire house? (This really makes you think about the types of finishes you want to install in your home and your furniture purchases and whether they are adequate for those fur babies in your life) Write down what you think might be a questionable choice and research it later.



Lifestyle

Do you entertain quite a bit? (Do you currently have room for this, or do you need to reallocate space for this purpose?) If so, what do you need to make sure you include so entertaining becomes easier?



What are your eating habits (i.e. eat on the run, sit down with family, in front of tv, etc.)? Do you have a designated eating area or can you eat anywhere.



Are you more casual or formal?



Write a list of your family's regular activities. (Does Joey like to do puzzles in the living room, or does Suzy like to paint in the kitchen? Finding out if you need to make rooms dual purpose or where to relocate these activities locations help you see how you want to use your space.)



Travel

Do you travel often?



Do you collect on your travels? If so, what type of things do you bring back?



Your Home

What is the style of your current home?



What style would you like to see in your home after we redesign it?



Can you make this work with your previous choice?

What do you love about your home? What do you like least about your home?

Your Taste

What do you consider your style? If you don't know, we'll figure it out!

(Circle all that appeal)

Contemporary

Rustic

Old World Elegance/ Tuscan

Eclectic/Collected

Traditional

Modern

Country French

Transitional

Other (describe here):

Do you have a favorite piece of furniture or artwork you absolutely love? (Maybe we can use this as the starting point for your design)?

Is there a public place that you like? (Think hotel, museum, even a TV show set)

What mood do you want to create overall? (Circle all that apply)

Elegant/Formal	Sophisticated	Warm/Cozy	Spacious
Casual/Relaxed	Lively/Bright	Cool	Romantic
Contemporary	Welcoming	Spacious	"Lived in"

Preference of Color: (Check all that apply)

Whites	Oranges	Blues	Pastels
Blacks	Reds	Jewel Tones	Grays
Burgundies	Navy Blue	Neutrals	Beiges
Pinks	Power Blue	Earth Tones	Tans
Aquas	Warm Colors	Pale Yellows	Eggplant
Mint Greens	Cool Colors	Yellows	Lavenders
Olive Greens	Peach	Purples	Forest Colors
Bright	Bold	Greens	Teals

Which color combinations do you love?

Which color or color combinations do you hate?

Does everyone in the house have the same design taste? If not, are the tastes similar or polar opposites? If they are different, have you figured out how you are going to reconcile the differences? Blind ballot, coin toss, majority vote...?

Preference of Patterns: (Circle all that apply)

Solid



Plaid



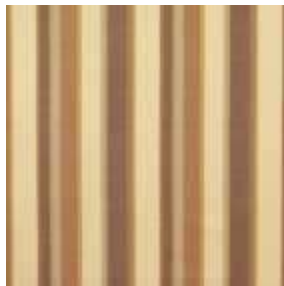
Animal (Jungle) Print



Animal (Bird) Print



Stripe



Paisley



Floral Prints



Leather



Mini-pattern



Geometric



Bold-pattern



Damask



Jacquard



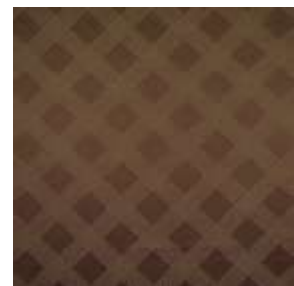
Tropical



Southwest



Diamond



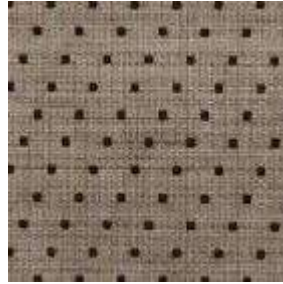
Check



Chevron



Dot



Ikat



Preference of Fabric: (Check all that apply)

Silk

Suede

Cotton

Sheer

Velvet

Leather

Toile

Satin

Rugs/Floorcoverings

Preference of Flooring Types: (Check all that apply)

Hardwood

Carpet

Laminate

Natural Stone

Concrete

Tile

Combination

Bamboo

Cork

What type of rugs do you prefer? (Circle all that apply)

Floral

Classic

Coastal

Shag / Plush



Medallion



Geometric



Modern



Animal



Hides / Leather



Natural Fiber



Solids



Borders



Where do you shop for home furnishings and accessories?

A large, empty rectangular area enclosed by a dashed pink border, intended for the user to provide their shopping preferences.

Do you purchase online? Which online stores do you frequently purchase from?

A large, empty rectangular area enclosed by a dashed pink border, intended for the user to provide their online shopping preferences.

Window Treatments

Which of the following do you require of window treatments? (Circle all that apply)

Privacy

Light Control

Decorative Only

Black Out

Which of the following do you prefer? (Circle all that apply)

Blinds

Shutters

Drapery and/or
Valances

Sheers

Roller Shades

List any additional information you have concerning your window treatment preference:

Artwork

Do you have pieces of art you want to use in the design?

What type of subject matter do you prefer? (Circle all that apply)

Landscape

Portrait

Still Life

Nautical

Abstract

Party Scene

Florals

Animals

What medium do you prefer? (Circle all that apply)

Oil on Canvas

Mixed Media

Metal

Wood

Sculpture

Art Glass Stone

Works on Paper Framed with Glass

Design Project & Investment

It is up to you to establish the priorities, investment, and timeline. We make every effort to work quickly, effectively, appropriately, and within a spending plan.

What kind of enhancements are you considering? (Circle all that apply)

Furniture	Flooring	Reupholstery	Remodel Kitchen
Window Treatments	Remodel Bathroom	Artwork, Mirrors	Appliances
Interior Paint	Accents	Plumbing Fixtures	Exterior Paint
Space Planning	Wallpaper	Lighting	Organization

What is your preferred time frame for having this project complete?

Are you planning to complete this project at once or in phases?

Please list the rooms you would like to work on, and indicate how each room is used.

How much are you going to invest in this project? (Circle your answer)

(Add an extra 20% to that figure to cover the incidentals that always pop up)

up to \$5,000 \$5,000 - \$8,000 \$8,000 - \$12,000 \$12,000 - \$15,000 \$15,000+

What is more important to you... the budget or the result?



Miscellaneous

Have you worked with a designer/decorator before?



If you have worked with a designer/decorator before, how was the experience?



What else would you like us to know?



How to Measure & Photograph Your Space

This guide will help you to provide the following information...

- ♥ Floor Plan
 - ♥ Elevations
 - ♥ Take Photos
1. Use a pencil and the provided graph paper, sketch out the existing layout. Be sure to include the locations of all windows, fireplaces, doors, and closets. You can print out more copies if needed.
 2. Use a tape measure to measure each wall, corner to corner. Record the sizes and locations of all openings and built-ins (doorways, pass-throughs, built-in bookcases, fireplaces, etc).
 3. Next measure each wall in detail: start at one corner of the room and work your way around, measure the distance from the corner to the outside edge of the window casing, from there to the opposite edge of the window casing, from there to the edge of a built-in cabinet, and so on to the opposite corner.
 4. When you finish the first wall, total the measurement; it should match the first overall measurement. Continue this process around the room, and note the measurements on your drawing.

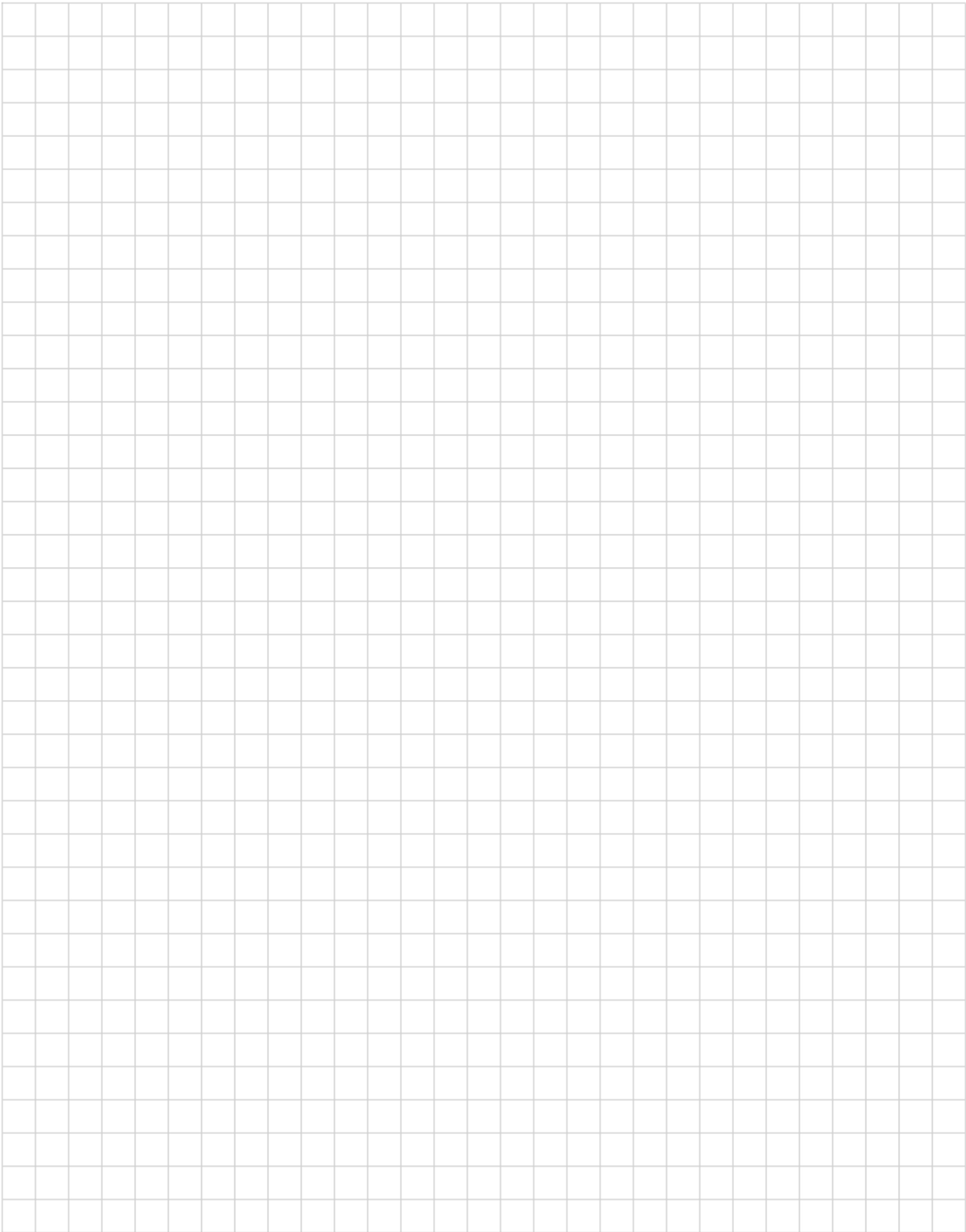
Other stuff it would be helpful for us to know:

- Ceiling heights for each room
- Location of all power outlets
- Location of switches
- Height of windows and doors
- Location of any wall vents
- Location of windows on each wall
- Location of any wall or ceiling lights

Please try to keep people (and clutter, if possible) out of the shot.

See the last page for photo taking tips.

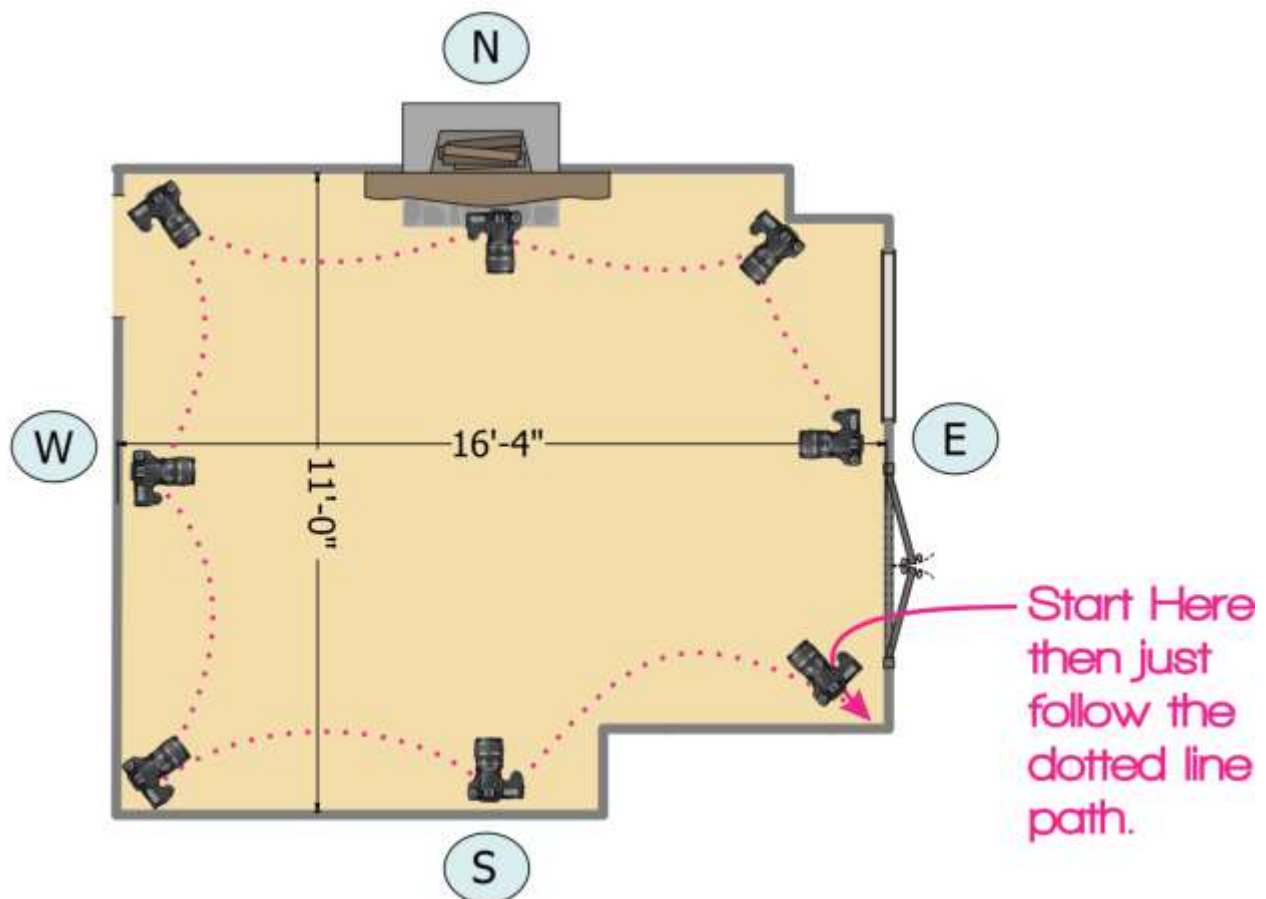
Graph Paper Page | One square equals twelve inches



How to Photograph Your Room

Tips

- (1) Take photos during the day
- (2) Turn on all the lights
- (3) Remove clutter & crap
- (4) Try taking photo first without the flash
- (5) Try turning the camera vertically
- (6) Try standing on a chair
- (7) Try a shot of tequila
- (8) Send your best photos



Photography Tips

- ♥ It is usually best to shoot in daylight and avoid flash — which can sometimes lend a blown-out and artificial appearance to a scene. It's nice to turn on lights in a room just for a little point of brightness. If you do use a flash, be sure not to reflect the light off of glass or mirrors, because you'll get a bright streak in the image that you won't like.
- ♥ Dusk is also a better time to photograph windows — low natural light will allow you to take pictures that aren't blown out by midday sunlight.
- ♥ For interiors especially, you will find that getting on your knees often offers the best angle.
- ♥ Try not to take the photo when the sun is shining directly into the room.
- ♥ Try turning the camera vertical to get a taller shot.

Tips from Apartment Therapy and Young House Love

Thank you for your input. We look forward to serving you with your decorating needs. You may fax, email, or mail this questionnaire to:

Divine Elements of Design
2321 S. Belt Line Rd, Suite #142
Grand Prairie, Texas 75051
214-843-3581 (office)
214-722-5557 (fax)
edecor@divineelementsofdesign.com
www.divineelementsofdesign.net